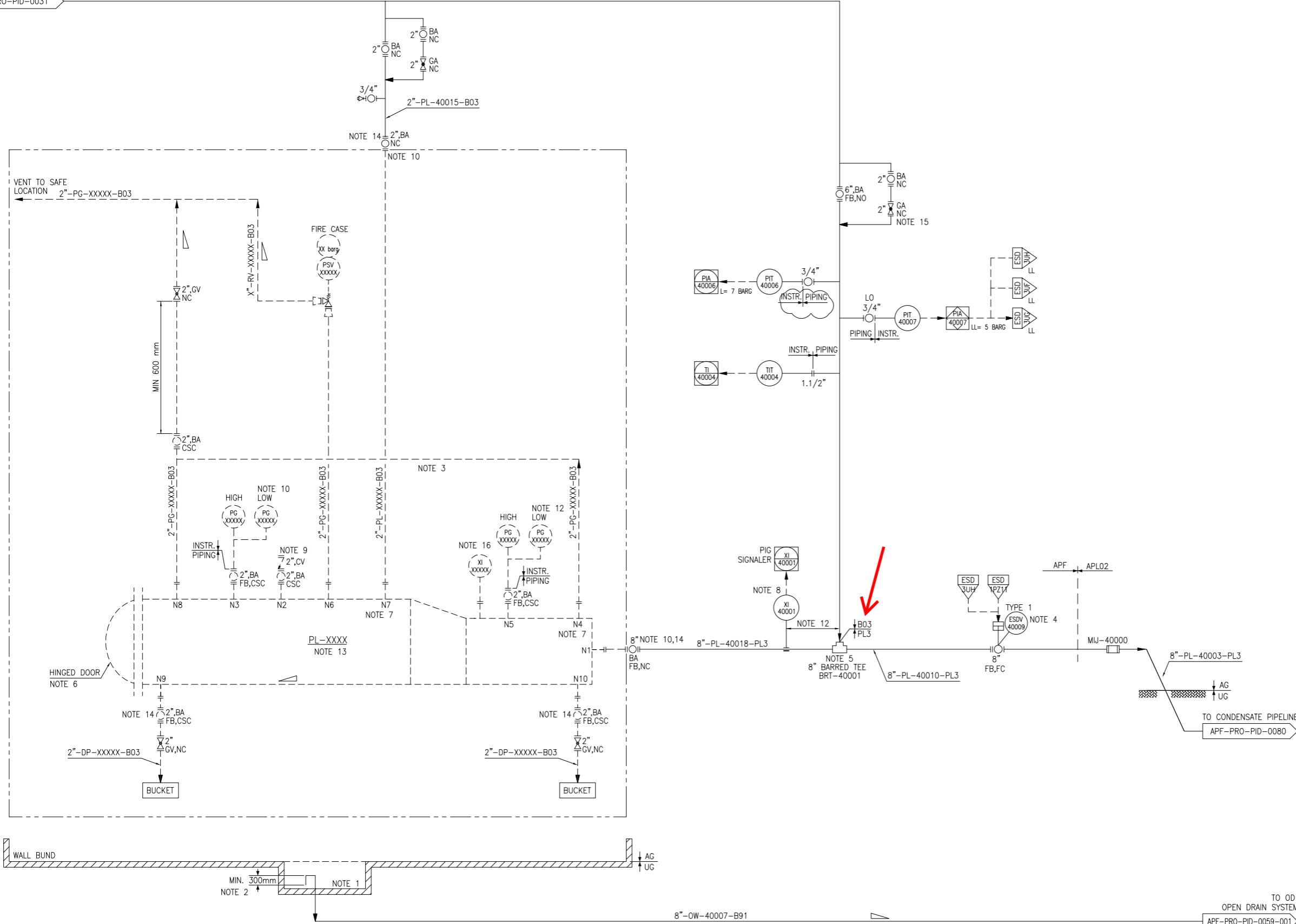


PL-XXXX (NOTE 13)  
 MOBILE PIG LAUNCHER (1x100%)  
 SIZE : MINOR BARREL (NOTE 13)  
 : MAJOR BARREL (NOTE 13)  
 DESIGN PRESSURE : 18.6 BARG (NOTE 5) (HOLD 1)  
 DESIGN TEMPERATURE : 0/70 °C  
 WORKING PRESSURE : 10.08 BARG (HOLD 1)  
 WORKING TEMPERATURE : 20.65-44.52 C

FROM CONDENSATE OFFLOADING PUMP  
 APF-PRO-PID-0031 6"-PL-40014-B03



- NOTES:
- BUND WITH GRATING COVER.
  - 300 mm U-SEAL IS PROVIDED.
  - THIS VALVE TO BE OPEN TO EQUALIZE MINOR AND MAJOR BARREL SECTION BEFORE MANUAL DEPRESSURIZE PIG SYSTEM TO FLARE SYSTEM TO MINIMIZE PIG MOVEMENT DUE TO HIGH DIFFERENT PRESSURE ACROSS THE PIG.
  - ABOVE GROUND BATTERY LIMIT ISOLATION VALVE IS TO BE MINIMUM 15 METERS FROM PROTECTING ZONE. IF IT IS NOT FEASIBLE, THE PASSIVE FIRE PROTECTION (PEP) ON VALVE INCLUDING ACTUATOR AND ACTUATING SYSTEM WITH CERTAIN EXTEND OF ASSOCIATED UPSTREAM ABOVE GROUND PIPE SECTION TO ENSURE INTEGRITY/IMPACT TO ADJACENT FIRE ZONE AND NEED SIMULTANEOUS BLOWDOWN SHALL BE PROVIDED.
  - DESIGN PRESSURE IS BASED ON MAXIMUM SURGE PRESSURE (HOLD 1).
  - PROVIDE DOOR SAFETY MECHANICAL INTERLOCK TO PREVENT WHEN OPENING UNDER PRESSURE.
  - TOP OF PIG LAUNCHER CONNECTION.
  - NON-INTRUSIVE TYPE E.G. MAGNETIC TYPE TO BE SUPPLIED.
  - NITROGEN PURGE
  - BLIND FLANGE TO BE PROVIDED BY EPC CONTRACTOR. OPERATION USING PNEUMATIC WRENCH.
  - RANGE OF LOW PRESSURE GAUGE SHALL BE 0~1 BAR WITH PRESSURE LIMITING DEVICE PROTECTION GAUGE FROM OVER PRESSURE.
  - PIG SIGNALER SHALL BE LOCATED AT MINIMUM DISTANCE OF ONE INTELLIGENT PIG LENGTH FROM THE BARRED TEE.
  - MOBILE PIG LAUNCHER PROVIDED BY OTHER.
  - VALVE SHALL BE LOCATED UNDER BUND AREA.
  - MANUAL EQUALIZATION / INITIAL FILLING PIPING LINE.
  - INTRUSIVE TYPE PIG SIGNALER.

- HOLDS:
- PRELIMINARY, PIPELINE DESIGN PRESSURE BASED ON THE RESULT FROM CONDENSATE EXPORT SURGE ANALYSIS.



REV	DESCRIPTION	DATE	BY	CHECK	APPR.	CHECK	APPR.
A1	ISSUED FOR REVIEW	01/06/26	WYW	GMJ	XF		

Total or partial reproduction and or utilization of this document are forbidden without prior written authorization of the owner.

**PTTEP International Limited**  
**AUNG SINKHA DEVELOPMENT PROJECT PHASE 1A**  
**APF PIPING AND INSTRUMENT DIAGRAM**  
**MOBILE PIG LAUNCHER**

SCALE :	DRAWING NO.	SHEET	REV.
NONE	MM-ASK-1A-APF-PRO-PID-0079	1/1	A1

TO OD1 OPEN DRAIN SYSTEM  
 APF-PRO-PID-0059-001